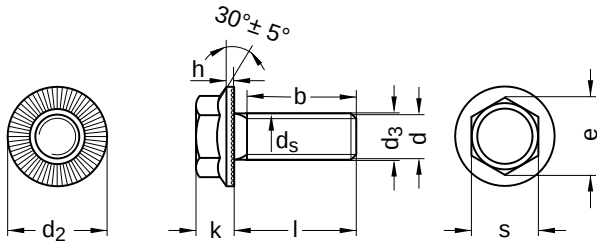


B 158
RIPP LOCK® self-locking screws

Hexagon head with flange and tothing

Steel | bright | Cr(VI)-free | Metric thread

Further information: Strength class 100



Diameter (d)	b		d ₂		d ₃		d _s	
	l up to 125	l up to 200	min.	max.	min.	max.	min.	max.
M5	16	22	10.50	11.2	5.5	5.7	4.82	5
M6	18	24	13.50	14.2	6.6	6.8	5.82	6
M8	22	28	17.36	18.2	9.0	9.2	7.78	8
M10	26	32	20.16	21.0	10.9	11.2	9.78	10
M12	30	36	23.16	24.0	13.9	14.2	11.73	12
M14	34	40	26.66	27.5	15.9	16.2	13.73	14
M16	38	44	30.00	31.0	17.9	18.2	15.73	16

Diameter (d)	h	nominal size	k		e	s		Pitch (P)	Tool size
	min.		min.	max.		min.	max.		
M5	0.6	4.3	4.06	4.54	8.87	7.78	8	0.80	SW 8
M6	0.7	5.5	5.26	5.74	11.05	9.78	10	1.00	SW 10
M8	1.0	7.0	6.71	7.29	14.38	12.73	13	1.25	SW 13
M10	1.4	8.5	8.21	8.79	16.64	14.73	15	1.50	SW 15
M12	1.4	10.0	9.71	10.29	18.90	16.73	17	1.75	SW 17
M14	1.6	12.0	11.65	12.35	21.10	18.67	19	2.00	SW 19
M16	1.6	14.0	13.65	14.35	24.49	21.67	22	2.00	SW 22

All technical data refer to the measure mm



B 158
RIPP LOCK® self-locking screws

Hexagon head with flange and tothing

Steel | bright | Cr(VI)-free | Metric thread

nominal size	Length (l)	
	min.	max.
10	9.71	10.29
12	11.65	12.35
14	13.65	14.35
16	15.65	16.35
18	17.65	18.35
20	19.58	20.42
22	21.58	22.42
25	24.58	25.42
30	29.58	30.42
35	34.50	35.50

nominal size	Length (l)	
	min.	max.
40	39.50	40.50
45	44.50	45.50
50	49.50	50.50
55	54.40	55.60
60	59.40	60.60
65	64.40	65.60
70	69.40	70.60
80	79.40	80.60
85	84.30	85.70

Diameter (d)	Length (l)																			
	10	12	14	16	18	20	22	25	30	35	40	45	50	55	60	65	70	80	85	
M5	●	●	●	●		●														
M6	●	●	●	●	●	●		●	●											
M8		●	●	●	●	●	●	●	●	●	●		●							
M10						●	●	●	●	●	●	●								
M12				●		●		●	●	●	●	●	●	●	●	●				
M14											●							●		
M16								●	●	●	●	●	●	●	●	●	●	●	●	

• Combinations available in the eShop | Other sizes on request

All technical data refer to the measure mm

