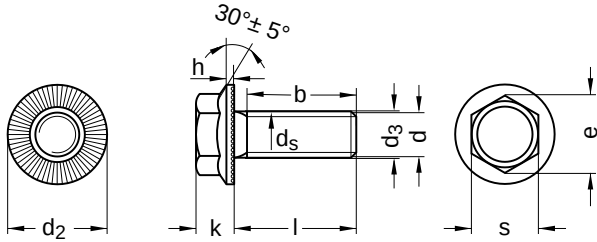


**B 158**  
**RIPP LOCK® self-locking screws**

Hexagon head with flange and tothing

Steel | zinc-plated | Cr(VI)-free | Metric thread

Further information: Strength class 100



Diameter (d)	b		d <sub>2</sub>		d <sub>3</sub>		d <sub>s</sub>	
	l up to 125	l up to 200	min.	max.	min.	max.	min.	max.
M5	16	22	10.50	11.2	5.5	5.7	4.82	5
M6	18	24	13.50	14.2	6.6	6.8	5.82	6
M8	22	28	17.36	18.2	9.0	9.2	7.78	8
M10	26	32	20.16	21.0	10.9	11.2	9.78	10
M12	30	36	23.16	24.0	13.9	14.2	11.73	12
M16	38	44	30.00	31.0	17.9	18.2	15.73	16

Diameter (d)	h	k		e	s		Pitch (P)	Tool size
	min.	nominal size	min.		max.	min.		
M5	0.6	4.3	4.06	4.54	8.87	7.78	8	SW 8
M6	0.7	5.5	5.26	5.74	11.05	9.78	10	SW 10
M8	1.0	7.0	6.71	7.29	14.38	12.73	13	SW 13
M10	1.4	8.5	8.21	8.79	16.64	14.73	15	SW 15
M12	1.4	10.0	9.71	10.29	18.90	16.73	17	SW 17
M16	1.6	14.0	13.65	14.35	24.49	21.67	22	SW 22

nominal size	Length (l)	
	min.	max.
10	9.71	10.29
12	11.65	12.35
14	13.65	14.35
16	15.65	16.35
18	17.65	18.35
20	19.58	20.42
25	24.58	25.42
30	29.58	30.42
35	34.50	35.50
40	39.50	40.50

nominal size	Length (l)	
	min.	max.
45	44.50	45.50
50	49.50	50.50
55	54.40	55.60
60	59.40	60.60
65	64.40	65.60
70	69.40	70.60
80	79.40	80.60

All technical data refer to the measure mm



**B 158**  
**RIPP LOCK® self-locking screws**

Hexagon head with flange and tothing

Steel | zinc-plated | Cr(VI)-free | Metric thread

Diameter (d)	Length (l)																
	10	12	14	16	18	20	25	30	35	40	45	50	55	60	65	70	80
M5	●	●		●		●											
M6	●	●	●	●		●	●	●									
M8		●	●	●	●	●	●	●	●	●							
M10				●	●	●	●	●	●	●				●			
M12				●		●	●	●	●	●	●	●	●		●		
M16							●	●	●	●	●	●	●	●		●	●

• Combinations available in the eShop | Other sizes on request

All technical data refer to the measure mm

