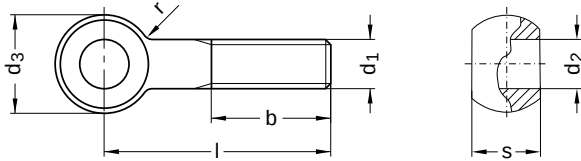


DIN 444
Eyebolts

Form B: product class B

Stainless steel A2 | Cr(VI)-free | Metric thread



Diameter (d)	b			d ₂		d ₃		nominal size	r		s		Pitch (P)
	l up to 125	l up to 200	l longer than 200	min.	max.	min.	max.		min.	max.	min.	max.	
M6	18	–	–	6	6.03	13.57	14	4	3.0	6	6.85	7	1.00
M8	22	28	–	8	8.04	17.57	18	4	3.0	6	8.85	9	1.25
M10	26	32	–	10	10.04	19.48	20	4	3.0	6	11.82	12	1.50
M12	30	36	49	12	12.04	24.48	25	6	4.5	9	13.82	14	1.75
M16	38	44	57	16	16.04	31.38	32	6	4.5	9	16.82	17	2.00
M20	46	52	65	18	18.04	39.38	40	6	4.5	9	21.79	22	2.50
M24	54	60	73	22	22.05	44.38	45	10	7.5	15	24.79	25	3.00

nominal size	Length (l)	
	min.	max.
30	29.35	30.65
35	34.20	35.80
40	39.20	40.80
45	44.20	45.80
50	49.20	50.80
55	54.05	55.95

nominal size	Length (l)	
	min.	max.
60	59.05	60.95
65	64.05	65.95
70	69.05	70.95
75	74.05	75.95
80	79.05	80.95
90	88.90	91.10

nominal size	Length (l)	
	min.	max.
100	98.90	101.10
110	108.90	111.10
120	118.90	121.10
130	128.75	131.25
140	138.75	141.25
150	148.75	151.25

Diameter (d)	Length (l)																	
	30	35	40	45	50	55	60	65	70	75	80	90	100	110	120	130	140	150
M6	●	●	●	●	●	●												
M8	●	●	●	●	●	●												
M10				●	●	●	●	●	●	●	●	●	●	●	●			
M12					●	●	●	●	●	●	●	●	●	●	●	●	●	●
M16							●	●	●	●	●	●	●	●	●	●	●	●
M20									●	●	●	●	●	●	●	●	●	●
M24										●	●	●	●	●	●	●	●	●

• Combinations available in the eShop | Other sizes on request

All technical data refer to the measure mm

