

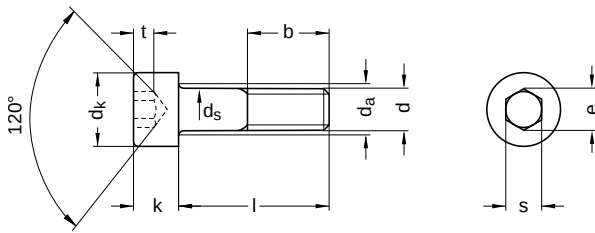
DIN 912 similar to ISO 4762

Cylinder screws

Hexagon socket

Steel 8.8 | bright | Cr(VI)-free | Metric thread

Further information: DIN-standard has been withdrawn | changed nominal lengths | the fine thread has been transferred to ISO 12474



Diameter (d)	b nominal size	da max.	dk		ds		k		e min.	s			Pitch (P)	t min.	Tool size
			min.	max.	min.	max.	min.	max.		min.	max.				
M3	18	3.6	5.32	5.5	2.86	3	2.86	3	2.87	2.5	2.52	2.58	0.50	1.3	SW 2,5
M4	20	4.7	6.78	7.0	3.82	4	3.82	4	3.44	3.0	3.02	3.08	0.70	2.0	SW 3
M5	22	5.7	8.28	8.5	4.82	5	4.82	5	4.58	4.0	4.02	4.10	0.80	2.5	SW 4
M6	24	6.8	9.78	10.0	5.82	6	5.70	6	5.72	5.0	5.02	5.14	1.00	3.0	SW 5
M8	28	9.2	12.73	13.0	7.78	8	7.64	8	6.86	6.0	6.02	6.14	1.25	4.0	SW 6
M10	32	11.2	15.73	16.0	9.78	10	9.64	10	9.15	8.0	8.02	8.18	1.50	5.0	SW 8
M12	36	13.7	17.73	18.0	11.73	12	11.57	12	11.43	10.0	10.02	10.18	1.75	6.0	SW 10
M14	40	15.7	20.67	21.0	13.73	14	13.57	14	13.72	12.0	12.03	12.21	2.00	7.0	SW 12
M16	44	17.7	23.67	24.0	15.73	16	15.57	16	16.00	14.0	14.03	14.21	2.00	8.0	SW 14
M18	48	20.2	26.67	27.0	17.73	18	17.57	18	16.00	14.0	14.03	14.21	2.50	9.0	SW 14
M20	52	22.4	29.67	30.0	19.67	20	19.48	20	19.44	17.0	17.05	17.23	2.50	10.0	SW 17
M24	60	26.4	35.61	36.0	23.67	24	23.48	24	21.73	19.0	19.06	19.28	3.00	12.0	SW 19
M27	66	30.4	39.61	40.0	26.67	27	26.48	27	21.73	19.0	19.06	19.28	3.00	13.5	SW 19
M30	72	33.4	44.61	45.0	29.67	30	29.48	30	25.15	22.0	22.06	22.28	3.50	15.5	SW 22
M36	84	39.4	53.54	54.0	35.61	36	35.38	36	30.85	27.0	27.06	27.28	4.00	19.0	SW 27
M42	96	45.5	62.54	63.0	41.61	42	41.38	42	36.57	32.0	32.08	32.33	4.50	24.0	SW 32

All technical data refer to the measure mm



DIN 912 similar to ISO 4762

Cylinder screws

Hexagon socket

Steel 8.8 | bright | Cr(VI)-free | Metric thread

nominal size	Length (l)	
	min.	max.
3	2.80	3.20
5	4.76	5.24
6	5.76	6.24
8	7.71	8.29
10	9.71	10.29
12	11.65	12.35
14	13.65	14.35
16	15.65	16.35
18	17.65	18.35
20	19.58	20.42
22	21.59	22.42
25	24.58	25.42
30	29.58	30.42
35	34.50	35.50
40	39.50	40.50
45	44.50	45.50

nominal size	Length (l)	
	min.	max.
50	49.50	50.50
55	54.40	55.60
60	59.40	60.60
65	64.40	65.60
70	69.40	70.60
75	74.40	75.60
80	79.40	80.60
85	84.30	85.70
90	89.30	90.70
95	94.30	95.70
100	99.30	100.70
110	109.30	110.70
120	119.30	120.70
130	129.20	130.80
140	139.20	140.80
150	149.20	150.80

nominal size	Length (l)	
	min.	max.
160	159.20	160.80
170	169.20	170.80
180	179.20	180.80
190	189.10	190.90
200	199.10	200.90
210	209.10	210.90
220	219.10	220.90
230	229.10	230.90
240	239.10	240.90
250	249.10	250.90
260	258.95	261.05
270	268.95	271.05
280	278.95	281.05
300	298.95	301.05
350	348.85	351.15
600	598.75	601.25

All technical data refer to the measure mm



DIN 912 similar to ISO 4762

Cylinder screws

Hexagon socket

Steel 8.8 | bright | Cr(VI)-free | Metric thread

Diameter (d)	Length (l)																						
	3	5	6	8	10	12	14	16	18	20	22	25	30	35	40	45	50	55	60	65	70	75	80
M3	●	●	●	●	●	●	●	●	●	●	●	●	●			●			●				
M4		●	●	●	●	●	●	●	●	●	●	●	●	●	●	●	●	●	●	●	●		●
M5			●	●	●	●	●	●	●	●	●	●	●	●	●	●	●	●	●		●		●
M6			●	●	●	●	●	●	●	●	●	●	●	●	●	●	●	●	●	●	●	●	●
M8				●	●	●	●	●	●	●	●	●	●	●	●	●	●	●	●	●	●	●	●
M10					●	●		●	●	●	●	●	●	●	●	●	●	●	●	●	●	●	●
M12								●		●	●	●	●	●	●	●	●	●	●	●	●	●	●
M14										●		●	●	●	●	●	●	●	●	●	●	●	●
M16										●		●	●	●	●	●	●	●	●	●	●	●	●
M18													●	●			●	●	●	●	●	●	●
M20													●	●	●	●	●	●	●	●	●	●	●
M24													●	●	●	●	●	●	●	●	●	●	●
M27																		●	●	●		●	●
M30																		●	●	●	●	●	●
M36																					●		●
M42																							

Diameter (d)	Length (l)																								
	85	90	95	100	110	120	130	140	150	160	170	180	190	200	210	220	230	240	250	260	270	280	300	350	600
M3																									
M4																									
M5				●		●		●																	
M6	●	●	●	●			●	●	●	●															
M8	●	●	●	●	●	●	●	●	●	●	●			●											
M10	●	●	●	●	●	●	●	●	●	●		●		●	●			●		●					
M12	●	●	●	●	●	●	●	●	●	●	●	●	●	●	●	●									
M14		●		●	●	●	●	●						●											
M16	●	●		●	●	●	●	●	●	●	●	●	●	●	●	●	●	●		●		●			●
M18		●			●	●		●																	
M20		●		●	●	●	●	●	●	●	●	●	●	●	●	●	●	●	●	●	●	●	●	●	●
M24		●		●	●	●	●	●	●	●	●	●	●	●											
M27		●		●		●	●	●	●	●	●	●	●	●											
M30		●		●	●	●	●	●	●	●	●	●	●	●		●				●				●	
M36		●		●	●	●	●	●		●	●	●	●	●	●	●	●	●	●	●		●	●		
M42				●																					

• Combinations available in the eShop | Other sizes on request

All technical data refer to the measure mm

