

## RIVKLE® Balancer

Balancer for RIVKLE® setting tools P2005/P1007/P2007/P2007 PN.

Technical information can be found on the last page.



Article number	Load capacity	For tool type
28259010820	2 - 3 kg	P2005, P1007, P2007, P2007 PN

All technical data refer to the measure mm





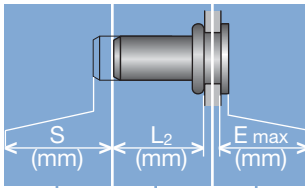
**Head diameter**  
**Overall length**  
**Thread size**



**Grip range**  
 Defines the range of total thickness of the customers part (even if it consists of more than one layer)



**Hole geometry**  
 If round → diameter  
 If hexagonal → width across flats

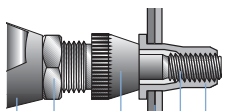


**Head projection after setting**  
 Variable according to the application (setting load, material substrate, etc.)

**Blind side projection after installation**  
 Defines the clearance needed on the blind side (cannot be used for quality control)

**Setting stroke**  
 Difference of total length before and after installation

**RIVKLE® Nut**



**RIVKLE® Stud**



- RIVKLE®
- Mandrel\*
- Customers part
- Anvil\*
- Counter nut
- Setting tool

\*in accordance to chosen RIVKLE®\*

All technical data refer to the measure mm

